

Ultrasonic Flow Detector



- Mitigate false calls with the new WAVE Interactive Scan Plan
- Reach performance & conformity with the Wave Application Concept
- Touchscreen : WAVE UTouch Technology
- Water and dust protected – designed for IP67
- Standards : ISO 22232-1
- Field Upgradeable

Features

UTouch Technology

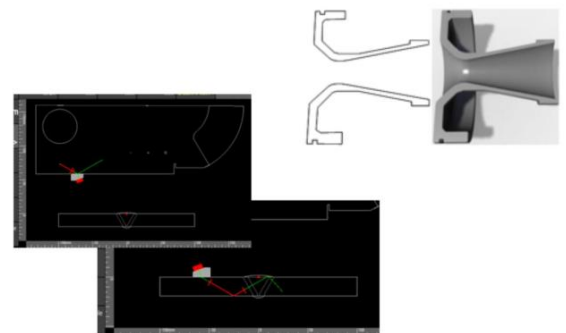
UTouch Technology allows your device to operate in the same way as a mobile phone. Combined with rugged components and an intelligent algorithm which makes the distinction between couplant and finger.



Interactive Scan Plan

Mitigate false calls with the new WAVE Interactive Scan Plan

The WAVE Interactive Scan Plan has been developed to ease diagnostics on the inspected part. The scan plan can reproduce complex geometries such as curved surfaces and T-Joints. Combined with a real-time Raytracer, this unique feature facilitates the distinction between a real flaw and a geometrical indication, thus avoiding unnecessary repair.



Application Concept

The WAVE application concept combines conformity and performance which allows the operator to customise the user interface according to their specific procedure.

The intuitive user interface with an easy to use display will guarantee workflow optimisation as well as preventing potential operational errors.



Contact us:

NIDETRONIX LLC, Bala Cynwyd, PA 19004 ; Website: www.nidetronix.com ;
Email: debasish.roy@nidetronix.com ; Phone number: +1 (215) 980-7716